

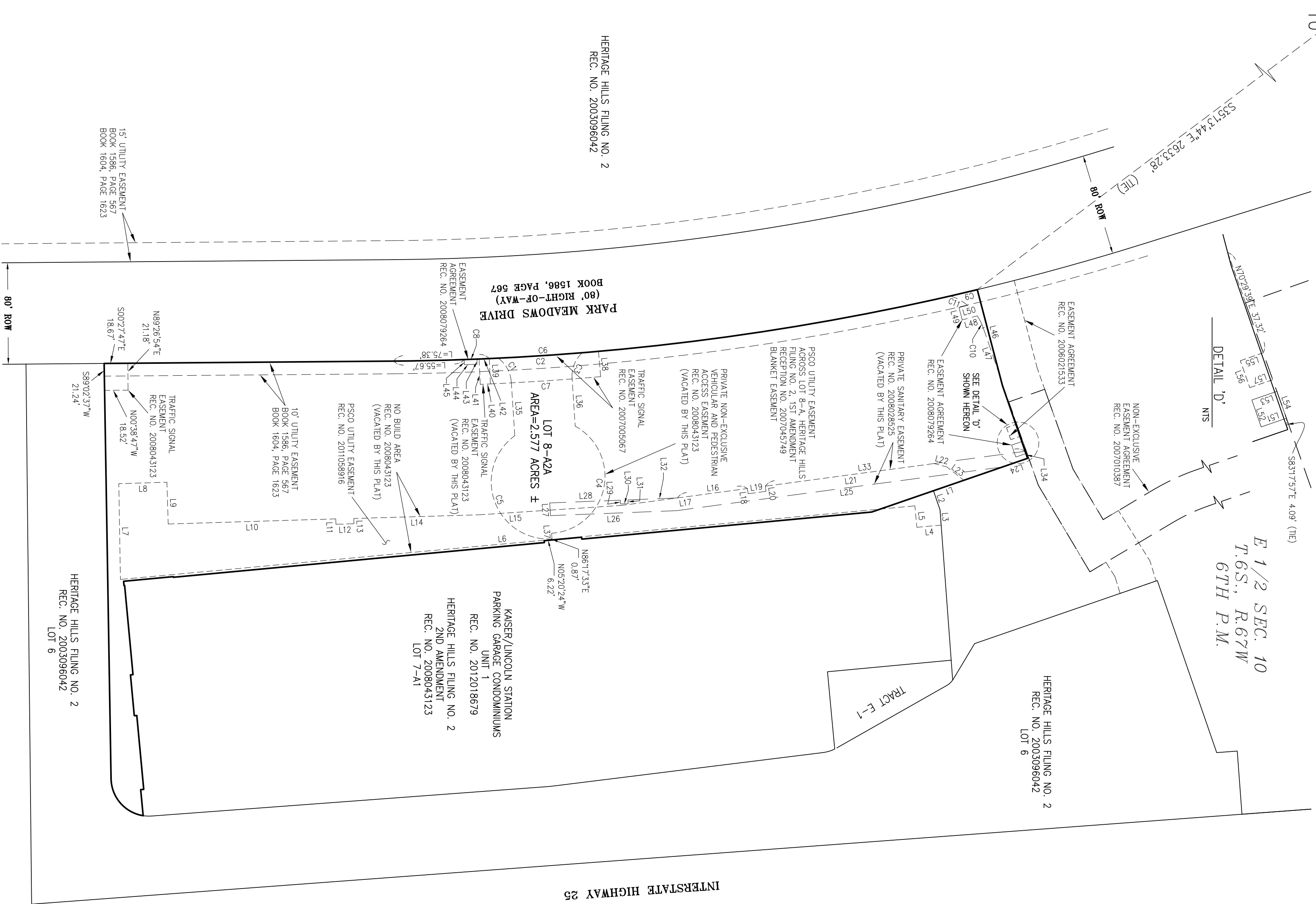
HERITAGE HILLS FILING NO. 2, 4TH AMENDMENT

PLANNING AREA HERITAGE HILLS PLANNED DEVELOPMENT, AMENDMENT 9, PLANNING AREA 9
 LOTS 8-A1 AND 8-A2 HERITAGE HILLS FILING NO. 2, 2ND AMENDMENT
 LOCATED IN THE EAST HALF OF SECTION 10, TOWNSHIP 6 SOUTH, RANGE 67 WEST OF THE SIXTH PRINCIPAL MERIDIAN
 CITY OF LONE TREE, COUNTY OF DOUGLAS, STATE OF COLORADO
 2.577 ACRES, 1 LOT AND EASEMENTS
 #SR21-07
 FINAL PLAN

N 1/4 COR. SEC. 10
 165.767W, 67H P.M.
 1/2" = 60'
 3 1/4" ALUMINUM CAP
 0.1' ABOVE SURFACE
 STAMPED: PLS 25369

N85°36'02"E 2539.42' BASIS OF BEARINGS
 NORTH LINE, NE 1/4, SECTION 10, T6S, R67W, 6TH P.M.

NE COR. SEC. 10
 165.767W, 67H P.M.
 1/2" = 60'
 3 1/4" ALUMINUM CAP
 0.1' ABOVE SURFACE
 STAMPED: PLS 34980



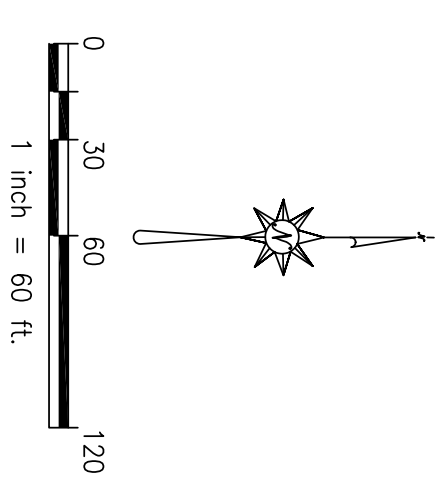
EXISTING EASEMENTS

CURVE TABLE

CURVE #	DELTA	RADIUS	CHORD BEARING	CHORD LENGTH	LENGTH
C1	50° 33' 49"	25.00'	S81° 00' 39"W	21.35'	22.06'
C2	1° 51' 53"	2040.00'	N3° 42' 35"W	66.39'	66.46'
C3	51° 01' 10"	25.00'	S88° 11' 52"E	21.53'	22.26'
C4	147° 46' 09"	45.00'	N77° 35' 31"W	86.46'	118.06'
C5	147° 46' 09"	45.00'	N77° 35' 31"W	86.46'	118.06'
C6	2° 25' 23"	2040.00'	N3° 42' 30"W	86.26'	86.27'
C7	2° 25' 20"	2040.00'	N3° 42' 29"W	87.08'	87.09'
C8	0° 16' 51"	2040.00'	N2° 10' 01"W	10.00'	10.00'
C9	0° 36' 45"	2040.00'	N13° 11' 58"W	21.80'	21.80'
C10	151° 10' 05"	40.00'	S63° 22' 50"W	10.56'	10.59'
C11	22° 20' 44"	40.00'	S28° 25' 41"W	15.50'	15.60'

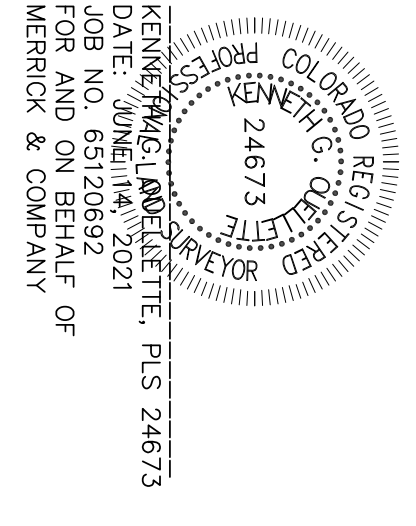
LINE TABLE

LINE #	BEARING	LENGTH
L1	S19° 02' 06"E	25.36'
L2	N70° 57' 54"E	15.94'
L3	N85° 45' 43"E	12.03'
L4	N6° 20' 24"W	19.25'
L5	N84° 39' 30"E	17.00'
L6	N6° 17' 30"W	62.830'
L7	N89° 02' 37"E	75.54'
L8	S7° 41' 58"E	37.95'
L9	S88° 18' 00"W	32.96'
L10	S7° 45' 18"E	132.13'
L11	S88° 18' 02"W	4.25'
L12	S7° 41' 58"E	14.21'
L13	N88° 18' 02"E	4.12'
L14	S7° 41' 55"E	99.10'
L15	S3° 48' 18"E	112.04'
L16	S7° 37' 46"E	55.76'
L17	S7° 37' 46"E	89.69'
L18	S82° 22' 15"W	4.12'
L19	S7° 37' 47"E	14.21'
L20	N82° 22' 13"E	4.12'
L21	S7° 38' 07"E	134.19'
L22	S15° 06' 38"W	10.49'
L23	S37° 48' 59"W	16.85'
L24	S19° 02' 06"E	21.02'
L25	S7° 38' 07"E	239.25'
L26	S2° 15' 43"E	99.25'
L27	S86° 17' 33"W	10.00'
L28	N2° 15' 43"W	55.75'
L29	N87° 44' 17"E	3.00'
L30	N2° 15' 43"W	6.00'
L31	S87° 44' 17"W	3.00'
L32	N2° 15' 43"W	38.84'
L33	N7° 38' 07"W	276.52'
L34	N70° 57' 54"E	5.79'
L35	N86° 17' 33"E	42.54'
L36	N86° 17' 33"E	38.01'
L37	N86° 17' 33"E	4.41'
L38	N85° 05' 06"E	20.00'
L39	N87° 25' 12"E	20.00'
L40	S02° 34' 46"E	8.00'
L41	S87° 25' 12"E	20.00'
L42	N02° 34' 46"W	8.00'
L43	N89° 01' 30"E	4.00'
L44	S2° 10' 01"E	10.00'
L45	S89° 01' 30"W	4.00'
L46	S75° 16' 20"W	71.54'
L47	S70° 57' 54"W	41.31'
L48	S14° 48' 22"E	12.22'
L49	S75° 16' 20"W	10.00'
L50	N14° 48' 22"W	7.01'
L51	S19° 02' 06"E	9.36'
L52	S70° 57' 54"W	10.00'
L53	N19° 02' 06"W	9.26'
L54	N70° 29' 39"E	10.00'
L55	S19° 02' 06"E	8.50'
L56	N70° 29' 39"E	10.00'
L57	N19° 02' 06"W	8.50'



LEGEND

- SECTION LINE
- BOUNDARY LINE
- LOT LINE
- EASEMENT LINE



PRELIMINARY

SCALE 1"=60'
 DRAWN KCO
 CHECKED JAW
 APPROVED KCO

MERRICK
 5970 Greenwood Plaza Blvd.,
 Greenwood Village, CO 80111
 Phone: 303.751.0724

JOB 65120892 DATE 6/14/21 SH 3 OF 3